

The Jabra logo is displayed in black text on a bright yellow rectangular background.

# Jabra PRO™ 930



A BRAND BY

**GN Netcom**

© 2011 GN Netcom A/S. All rights reserved. Jabra® is a registered trademark of GN Netcom A/S. All other trademarks included herein are the property of their respective owners. (Design and specifications subject to change without notice).

MADE IN CHINA  
Type: WHB003



DESIGN REGISTRATION PENDING INTERNATIONAL

REGISTER YOUR JABRA AT [JABRA.COM/REGISTER](http://JABRA.COM/REGISTER) - FOR NEWS, SUPPORT AND COMPETITIONS

[www.jabra.com](http://www.jabra.com)

81-03324D

## Quick Start Guide

[www.jabra.com](http://www.jabra.com)

## CUSTOMER SUPPORT

### EUROPE

Belgique/Belgium	+ 49 (0)8031 2651 72
Czech Republic	+ 420 800 522 722
Danmark	Kontakt venligst din nærmeste forhandler (via følgende link) <a href="http://www.jabra.dk/forhandler">www.jabra.dk/forhandler</a>
Deutschland	+ 49 (0)8031 2651 72
España	+34 916 398 064
France	+ 33 (0) 130 589 075
Italia	+39 02 5832 8253
Luxembourg	+ 49 (0)8031 2651 72,
Nederland	+ 49 (0)8031 2651 72
Norge	+ 47 32 22 74 70
Österreich	+ 49 (0)8031 2651 72
Poland	0-801-800-550; + 48 12 254-40-15
Russia	<a href="mailto:techsupport.ru@jabra.com">techsupport.ru@jabra.com</a>
Suomi	+ 358 204 85 6040
Sverige	+ 46 (0)8 693 09 00
United Kingdom	+ 44 (0)1784 220 172

### ASIA

Australia	1-800-636-086 (local distributor)
China	+ 86-21-5836 5067
Hong Kong	800-968-265 (Toll free)
India	000-800-852-1185 (Toll free)
Indonesia	001-803-852-7664
Japan	+ 81-3-5297-7976
Malaysia	1800-812-160 (Toll free)
New Zealand	0800-447-982 (Toll free)
Philippines	1800-765-7022 (ETPI) 1800-1855-0144 (PLDT)
Singapore	800-8523-794 -(Toll free)
Taiwan	0080-186-3013 (Toll free)
Thailand	001-8008523-794 (Toll free)

For more languages please refer to the manuals on the CD.

### MIDDLE EAST/AFRICA

**E-mail Support:** [support.mea@gn.com](mailto:support.mea@gn.com)

### USA & CANADA

Canada	1-800-489-4199
USA	1-800-826-4656

GN Netcom A/S  
Lautrupbjerg 7  
DK-2750 Ballerup  
Denmark

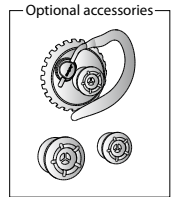
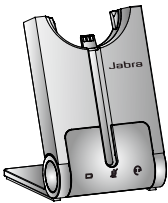
### WEB

[www.jabra.com](http://www.jabra.com) (for the latest support information and online User Manuals).

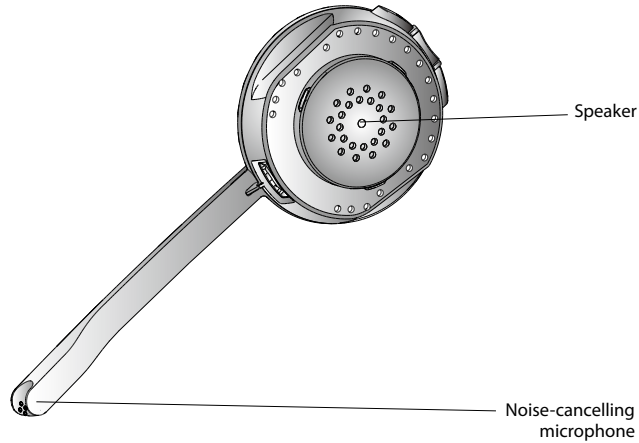
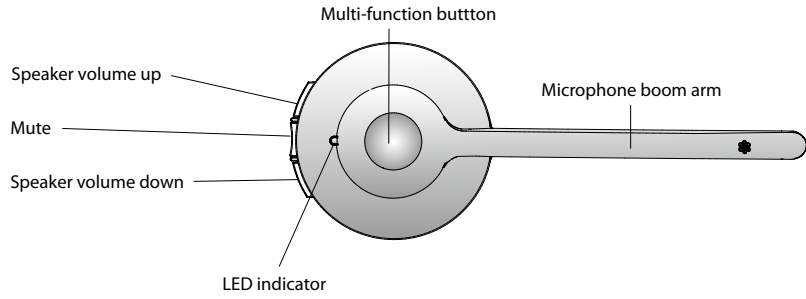
## LANGUAGES

ENGLISH / US	2
FRANÇAIS / FR	8
DEUTSCH / DE	14
ESPAÑOL / ES	20
繁體中文 / CHT	26

## PACKAGE CONTENTS

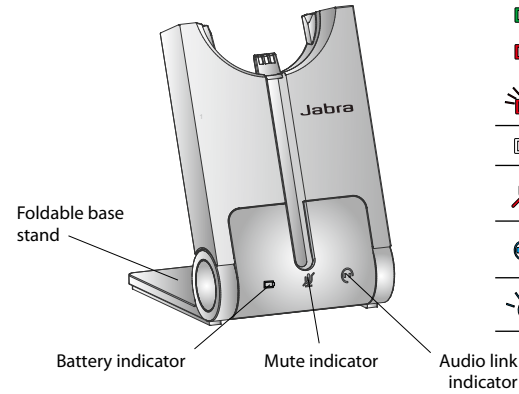


## JABRA PRO 930 HEADSET

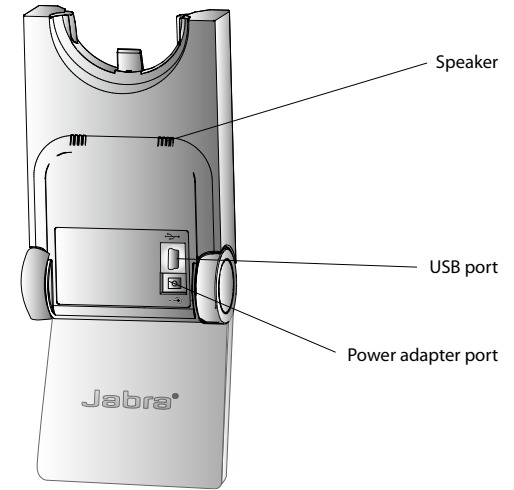


2

## JABRA PRO 930 BASE



Icon	Event
	Battery charging (slow flash)
	Full battery
	Low battery
	Very low battery (fast flash)
	Unknown battery status
	Microphone muted
	Active audio link between headset and base
	Searching for headset

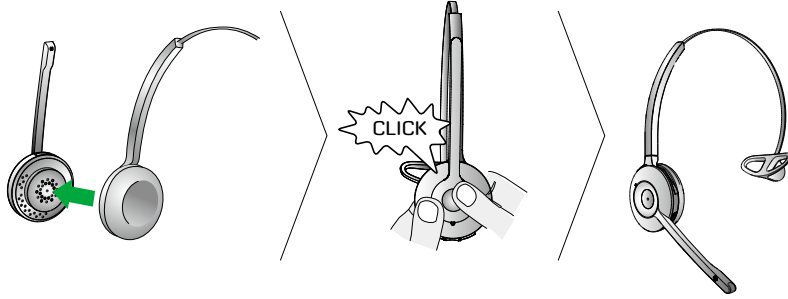


3

# SETUP

## STEP 1: ATTACH THE HEADBAND

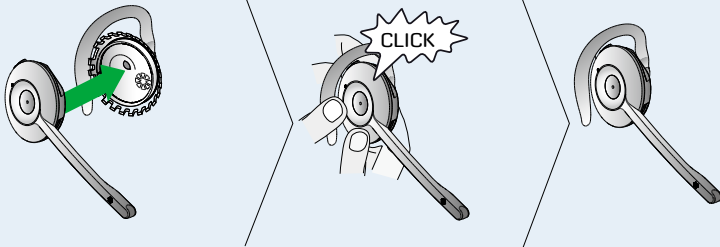
1. Align the headset and the headband wearing-style attachment, as illustrated, and press firmly together until they click into place (snap-to-click).
2. Rotate the microphone boom arm for left or right ear use.
3. Adjust the length of the headband to fit snug against the head.



### OPTIONAL ACCESSORIES

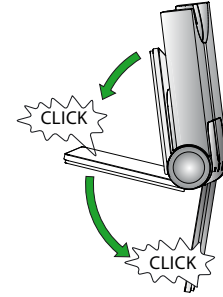
#### Attaching the earhook (not supplied in all regions)

1. Assemble the earhook wearing-style attachment for left or right ear use. If necessary, remove the earbud and replace with another size for best fit.
2. Align the headset and the earhook wearing-style attachment, as illustrated, and press firmly together until they click into place (snap-to-click).
3. Shape the earhook to fit snug around the ear.




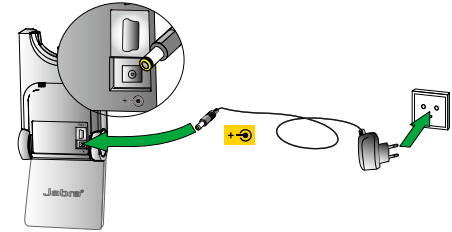
## STEP 2: UNFOLD THE BASE

The Jabra PRO base stand can be folded into three positions: open, closed, and standing position.




## STEP 3: CONNECT TO POWER

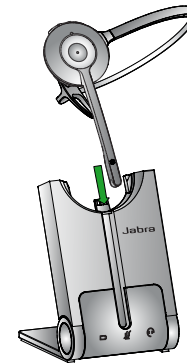
1. Plug the supplied power adapter into the port marked  on the base.
2. Connect the power adapter to the mains power socket.




## STEP 4: DOCK THE HEADSET

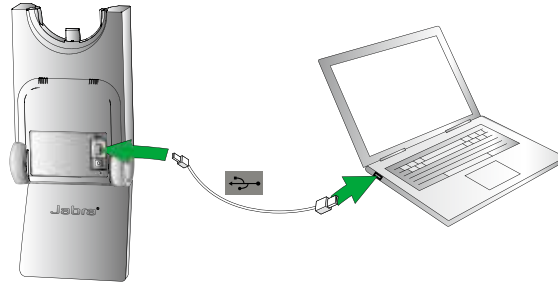
Dock the headset. When docked correctly the headset battery will begin charging, if needed.

Charge for 20 minutes or until the battery indicator on the base  is steady green. **Keep the headset docked during setup.**



### Step 5: Connect to PC

1. Plug the supplied USB cable into the port marked  on the base.
2. Connect the USB cable to any free USB slot on the PC.
3. Install Jabra PC Suite software from the supplied CD.



#### IMPORTANT

Set the Jabra PRO 930 as speaker and microphone in the softphone audio settings.

**YOU HAVE NOW SUCCESSFULLY CONNECTED YOUR JABRA PRO 930**